

# Robot palletisers

## RP-KR40-C1-PD-P1 | Robot palletiser

### Standard technical specifications

**Max Load:** 40Kg (inc. gripper)

**Concept:** Automatic

**Number of pick up points:** 1

**Number of pallet load positions:** 1

**Axis:** 4 axis robot

**Pallet sizes:** Euro 800x1200mm, Chep 1000x1200mm

**Max loaded pallet height:** 1800mm

**Product Infeed height:** 500mm to 1500mm

**Pallet outfeed height:** Floor to 600mm

**Sample power consumption:** 8Kw, 0.82A/Ph, 400V, 3 Phase, N&E  
(Product and Gripper dependant)

**Sample air supply:** Up to 16.8 cfm @ 80 psi (6 bar)  
(Product and Gripper dependant)

**Typical net weight:** 1000Kg

**Specific components:** Kuka, Rockwell Controls, SMC Pneumatics

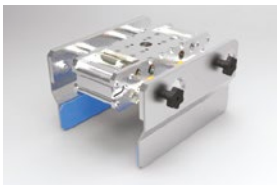
**Colour:** RAL 7035 grey

### Typical gripper options

VACUUM GRIPPER



PADDLE GRIPPER



GANTRY GRIPPER



### Options

Schneider partnership/Siemens controls

Product infeed conveyors

Pallet conveyors

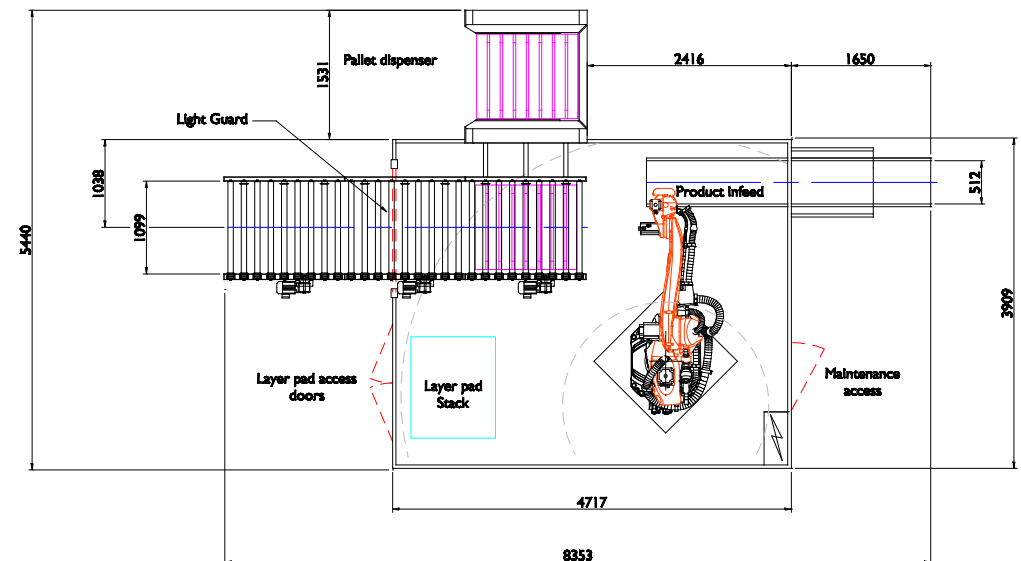
Layer pad store

Pallet store

Robot selection to suit payload and product requirements

6 axis robot

Gripper and end effector variants



For more information, contact: WestRock Automated Packaging Systems  
Phone: +44.0.1502.713777 • E-mail: [aps.uk@westrock.com](mailto:aps.uk@westrock.com) • [www.linkxpackaging.com](http://www.linkxpackaging.com)

