

# Multi case/carton erectors

## CF-600-G2 | Case/carton erector

### Standard technical specifications

**Speed:** up to 15 CPM

**Concept:** 2 sizes on demand

**Board size:** Min L320 x W250 x OH150 | Max L750 x W500 x OH700

**Board magazine capacity:** 2400mm

**Typical board loading height:** 600mm

**Outfeed height:** 600mm

**Sample power consumption:** 5Kw, 16A/Ph, 440V, 3 Phase, N&E

**Air supply:** Up to 15 cfm @ 80 psi (6 bar)

**Net weight:** 1250Kg

**Closure:** Hot melt glue

**Specific components:** Rockwell Controls

**Mainframe:** mild steel powder coated

### Board specification

**Case/Carton Styles:** Low/High Walled, Shelf Ready

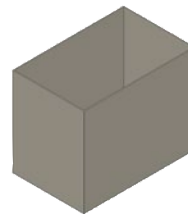
**Materials:** B-flute, C-flute, E-flute or combination

**Styles:** FEFCO 0200, 0201 and RSC/HSC

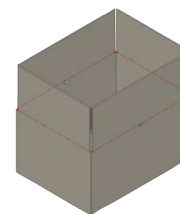
### Options

FEFCO board style variants

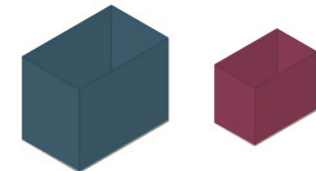
Oversized and undersized case variants



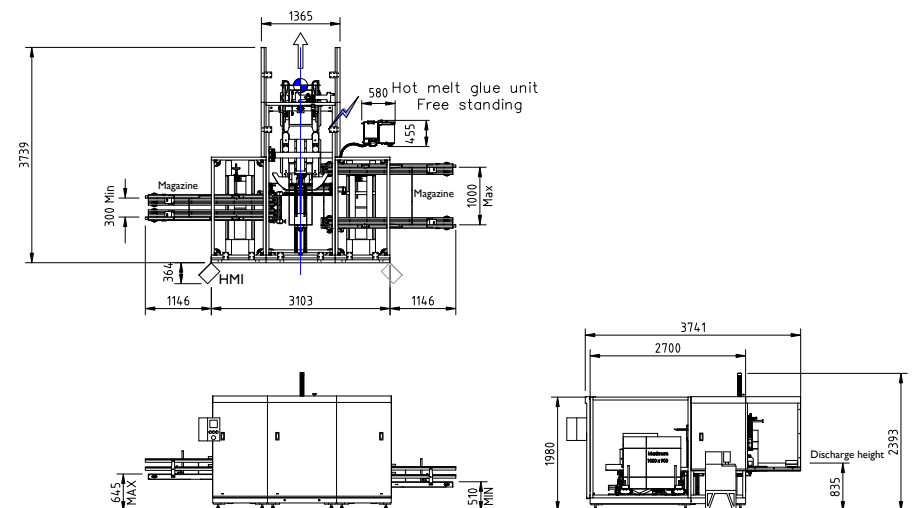
FEFCO 0200



FEFCO 0201



2 sizes on demand



For more information, contact: WestRock Automated Packaging Systems  
Phone: +44.0.1502.713777 • E-mail: [aps.uk@westrock.com](mailto:aps.uk@westrock.com) • [www.linkxpackaging.com](http://www.linkxpackaging.com)

